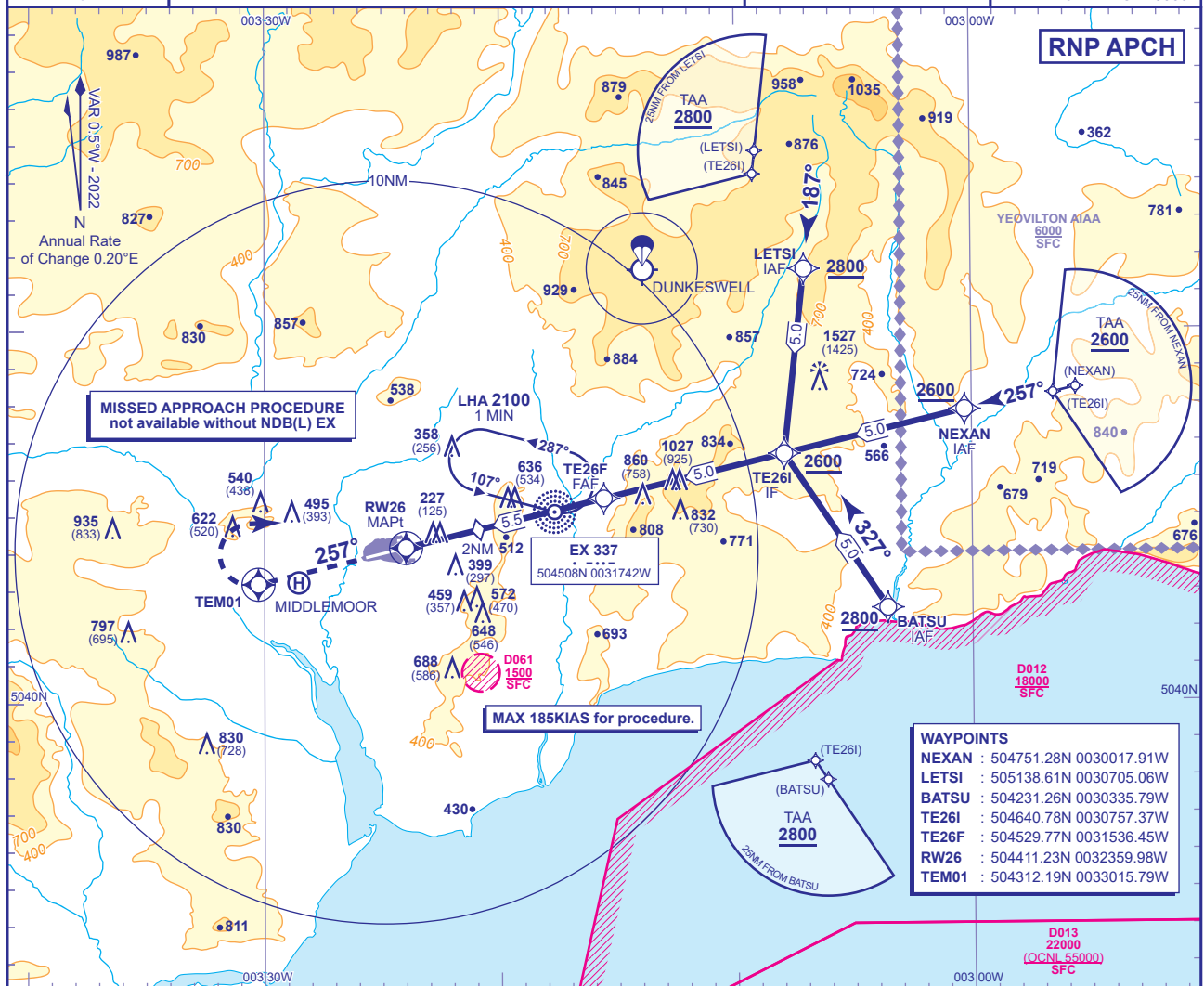


RNP
RWY 26
(A,B,C,D)

(ACFT CAT A,B,C,D)

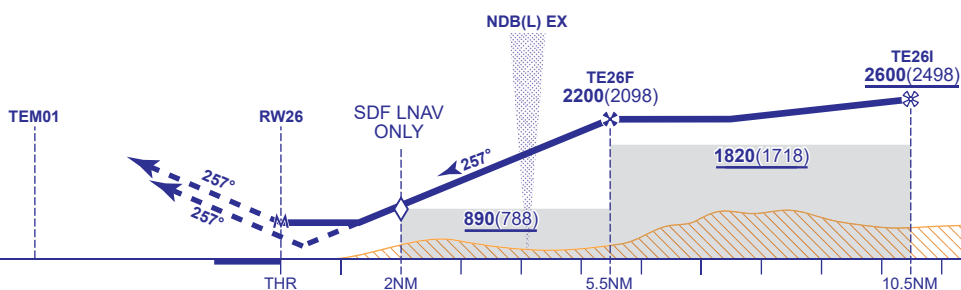
MIN TEMP -15°C
TRANSITION ALTITUDE 3000



NM to RW26	5	4	3	2(SDF)	1
ALT(HGT)	2020(1918)	1650(1548)	1280(1178)	900(798)	530(428)

MAPt (LNAV): RW26

Climb to **2500**. Initially towards **TEM01**. At **TEM01** revert to conventional navigation and turn right to **NDB(L) EX** and continue climb to **2500** or as directed



Aircraft Category		A	B	C	D	Rate of descent	G/S KT	160	140	120	100	80
OCA (OCH)	LNAV/VNAV	570(468)	570(468)	570(468)	570(468)		FT/MIN	990	870	740	620	500
	LNAV	630(528)	630(528)	630(528)	630(528)							
VM(C)OCA (OCH AAL)	Total Area	700(598)	900(798)	1090(988)	1090(988)							

NOTE 1 Clearance for Initial Approach via BATSU subject to Danger Area activity.

CHANGE (11/23): VM/CIOCA(OCH AAL) CAT B. TE26I/MOCA HEIGHT INCREASE ON PROFILE.